

True I.D. Fittings

PTFE Hose Fittings

Sanitary Tri-Clamps

Application

- For use with True I.D. PTFE hoses on page 1025



| Hose Size | Clamp Size | 316 Stainless Steel Part # |
|-----------|------------|----------------------------|
| 1/2" | 1" | TCR-T08-16 |
| 1/2" | 1-1/2" | TCR-T08-24 |
| 3/4" | 1-1/2" | TCR-T12-24 |
| 1" | 1" | TCR-T16-16 |
| 1" | 1-1/2" | TCR-T16-24 |
| 1-1/2" | 1-1/2" | TCR-T24-24 |
| 2" | 2" | TCR-T32-32 |

Mini Sanitary Tri-Clamps



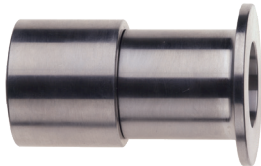
| Size | 316 Stainless Steel Part # |
|------|----------------------------|
| 1/2" | TCMR-T08 |
| 3/4" | TCMR-T12 |

NOTE: Contact Dixon® at 888.226.4673 for GSM and PTFE hose assemblies

Flange Retainers

Feature

- For use with lap joint flanges. See pages 967-968



| Size | 316 Stainless Steel Part # | 316 Stainless Steel PTFE Encapsulated Part # |
|--------|----------------------------|--|
| 1/2" | FRR-T08 | --- |
| 3/4" | FRR-T12 | FRRE-T12 |
| 1" | FRR-T16 | FRRE-T16 |
| 1-1/4" | --- | FRRE-T20 |
| 2" | FRR-T32 | --- |

Crimp Collars

Convoluted Crimp Collars

Features

- For True I.D. open pitch convoluted PTFE hose only
- New design for ease of installation and improved appearance of finished crimp



| Size | Carbon Steel Part # | 304 Stainless Steel Part # |
|--------|---------------------|----------------------------|
| 1/4" | CSC-T04-1 | SSC-T04-1 |
| 3/8" | CSC-T06-1 | SSC-T06-1 |
| 1/2" | CSC-T08-1 | SSC-T08-1 |
| 3/4" | CSC-T12-1 | SSC-T12-1 |
| 1" | CSC-T16-1 | SSC-T16-1 |
| 1-1/4" | CSC-T20-1 | SSC-T20-1 |
| 1-1/2" | CSC-T24-1 | SSC-T24-1 |
| 2" | CSC-T32-1 | SSC-T32-1 |

Smooth Bore Crimp Collars

Features

- For True I.D. smooth bore PTFE hose only
- New design for ease of installation and improved appearance of finished crimp



| Size | Carbon Steel Part # | 304 Stainless Steel Part # |
|------|---------------------|----------------------------|
| 1/4" | CSC-T04-2 | SSC-T04-2 |
| 3/8" | CSC-T06-2 | SSC-T06-2 |
| 1/2" | CSC-T08-2 | SSC-T08-2 |
| 3/4" | CSC-T12-2 | SSC-T12-2 |
| 1" | CSC-T16-2 | SSC-T16-2 |

Contact Dixon at 888.226.4673 for assembly instructions and crimp recommendations.