

CVV-Series Hydraulic Couplings

European Dust Plugs

Body Size	Plastic Part #
1/4"	2CVVDP
3/8"	3CVVDP
1/2"	4CVVDP
3/4"	6CVVDP
1"	8CVVDP
1-1/4"	10CVVDP

European Dust Caps

Body Size	Plastic Part #
1/4"	CVV2DC
3/8"	CVV3DC
1/2"	CVV4DC
3/4"	CVV6DC
1"	CVV8DC
1-1/4"	CVV10DC



TD-Series: 15K and 20K Pressure Couplings

Application

- Commonly used on water-blast or wireline equipment and pump systems

Sizes

- 1/2" body
- 1/2" FNPT or 9/16" MP threads

Features

- Unvalved, high flow
- Thread to connect
- Dust caps and plugs available

Materials

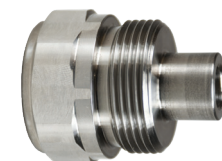
- Machined components are manufactured using 316 stainless steel bar stock
- Stainless steel retaining ring maximizes corrosion resistance and extends service life
- Couplers have a nitrile anti-extrusion ring, providing resistance to O-ring dynamic impulse pressure damage
- Nitrile rubber seals are standard

Specifications

- Temperature range: -40°F to 250°F (-40°C to 121°C)
- 15,000 PSI for NPTF threads; 20,000 PSI for MP threads
- Interchangeable with SPIR STAR CQD Series, DNP CRS Series, and Jetstream Screw Type



4TDF4-SS



TD4F4-SS



4TDPF4.5-SS



TD4PF4.5-SS



Body Size	Threads	Description	Stainless Steel Part #
1/2"	1/2" - 14 NPTF	coupler	4TDF4-SS
		plug	TD4F4-SS
	9/16" MP	coupler	4TDPF4.5-SS
		plug	TD4PF4.5-SS

Dust Caps

Body Size	Threads	Aluminum Part #
1/2"	1/2" - 14 NPTF	TD4DC-A
	9/16" MP	TD4.5DC-A

Dust Plugs

Body Size	Threads	Aluminum Part #
1/2"	1/2" - 14 NPTF	4TDDP-A
	9/16" MP	4.5TDDP-A