

## Mini Needle Valves

### Features

- Available in a variety of materials and handle options
- FKM O-ring seal and PTFE back-up ring below the threads protects from corrosion and galling
- Stem threads are rolled for strength and ease of operation

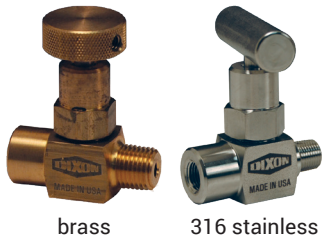
### Material

- Stems: 316 stainless steel

### Specifications

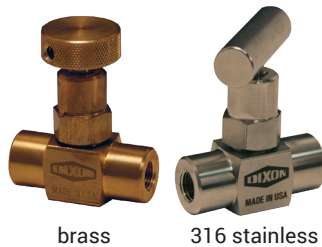
- Metal-to-metal hard seat design is 100% helium leak tested to 1 x 10<sup>-4</sup> ml/s at **200 PSI**
- 1/8" and 1/4" are orifice size: 0.172", flow coefficient: 0.42
- 1/2": orifice size are 0.187", flow coefficient: 0.44, hex body

### Male to Female



NPT Size	Handle Style	PSI @ 200°F	Brass Part #	Handle Style	PSI @ 200°F	Zinc Nickel Plated Steel Part #	316 Stainless Steel Part #
1/8" - 27	knurled knob	6000	MFB101	T design	10000	MFC101	MFS101
1/4" - 18	knurled knob	6000	MFB102	T design	10000	MFC102	MFS102
1/2" - 14	---	---	---	T design	10000	MFC404	MFS404

### Female to Female



NPT Size	Handle Style	PSI @ 200°F	Brass Part #	Handle Style	PSI @ 200°F	Zinc Nickel Plated Steel Part #	316 Stainless Steel Part #
1/8" - 27	knurled knob	6000	FFB101	T design	10000	FFC101	FFS101
1/4" - 18	knurled knob	6000	FFB102	T design	10000	FFC102	FFS102
1/2" - 14	---	---	---	T design	10000	FFC404	FFS404

## Multipoint Needle Valves

### Features

- Reduces the number of gauge and other instrument connections to permanent piping installations, decreasing possible leak paths
- FKM O-ring seal and PTFE back-up ring below the threads protects from corrosion and galling
- Stem threads are rolled for strength and ease of operation

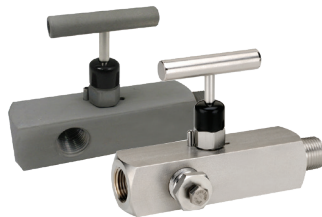
### Material

- Stems: 316 stainless steel

### Specifications

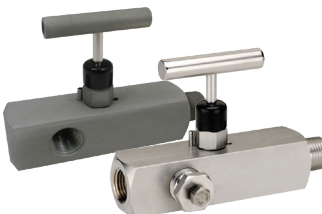
- Metal-to-metal hard seat design is 100% helium leak tested to 1 x 10<sup>-4</sup> ml/s at **200 PSI**
- 1/2" female NPT port
- Orifice size is 0.187", flow coefficient: 0.44

### Hard Seat Male to Female



NPT Size	Handle Style	PSI @ 200°F	Zinc Nickel Plated Steel Part #	316 Stainless Steel Part #
1/2" - 14	T design	10000	MFC204	MFS204
3/4" - 14			MFC20604	MFS20604

### Soft Seat Male to Female



NPT Size	Handle Style	PSI @ 200°F	Zinc Nickel Plated Steel Part #	316 Stainless Steel Part #
1/2" - 14	T design	6000	MFC304	MFS304
3/4" - 14			MFC30604	MFS30604